

## Flir thermal imaging camera: instructions for loan and use

### How to borrow the camera

The camera will initially be available to borrow via Kate Harrison. Please contact Kate to arrange a loan. [kate.harrison2@btopenworld.com](mailto:kate.harrison2@btopenworld.com) 01829 751696 to book.

Collection may be available from the Community Shop during opening hours by prior arrangement.

You can use the camera with family and friends, but the initial borrower will be responsible.

### How to use the camera

The Flir thermal camera is very easy to use. A copy of the user manual can be downloaded from our website [www.goingcarbonneutral.co.uk](http://www.goingcarbonneutral.co.uk). Thermal imaging is most effective on cold, dry evenings, when the heating is on and the contrast between indoor and outdoor temperatures is greatest. Take images both outside and inside. Outside images will show any 'hot spots' in orange/red colours, indicating where heat is leaking out of the house, while indoor images will show cold spots in blue tones. Walls, windows and doors should all be checked to look, for example, for any defective wall insulation, poor double glazing, gaps where heat is escaping.

### Some examples

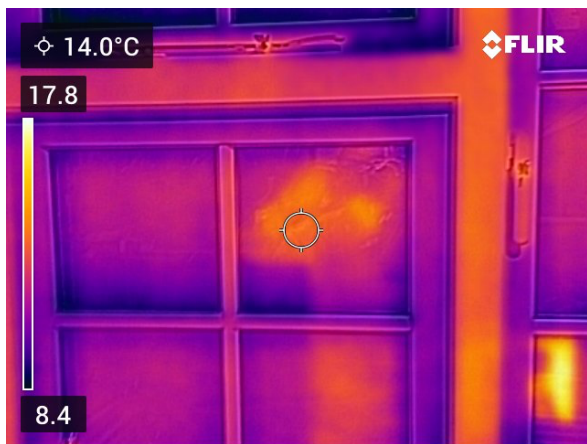


Double glazed window outside

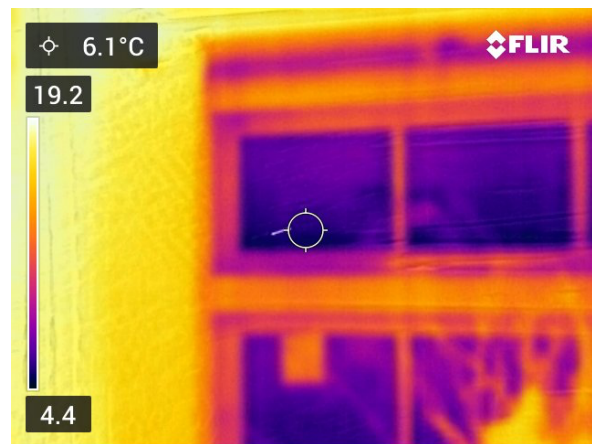


Single glazed window outside

Note how much more effective the double glazing is at keeping the heat in; -5.1°C on the outside compared to 9°C for the single glazing. The yellow shape in both images is a reflection of the photographer, who is hotter than the surrounding air!



Double glazed window inside



Single glazed window inside

The inside glass of the double-glazed window is much warmer than that of the single glazing. The contrast is not quite so extreme in reality as the temperature spot for the double glazing is on the photographer's reflection – thus, be careful when selecting spot temperatures! However, the lighter colours of the double-glazed panes indicate warmer glass.

Some quick start instructions and etiquette notes follow, together with some diagrams taken from the manual.

We hope that you find the thermal camera helpful. Let us know how you get on.

Ashton Hayes Community Energy C.I.C.


#### Quick start instructions:

- Push the On/Off button to turn on the camera.
- Units, language, date and time should already be set.
- To save an image, press the Save button
- You can move images to your computer using the USB cable.
- Please remember to save your images and then clear the camera's memory before returning it, so that it is ready for the next user.
- Please also recharge the camera before returning it.

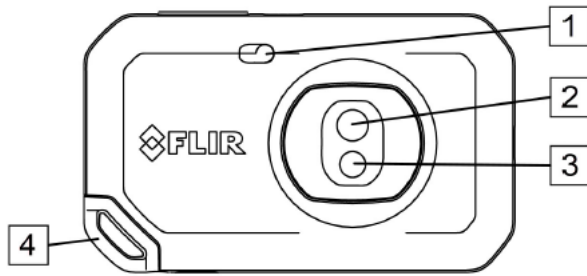
## 11.9 Deleting all images

You can delete all images from the camera memory.

To delete all images, do the following:

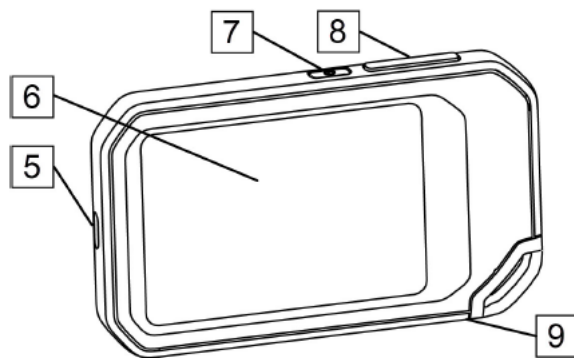
1. Tap the *Settings* button .
2. Tap *Save options & storage* and then tap *Delete all saved files....* This displays a dialog box.
3. To permanently delete all images, tap *Delete*.

## 6.1 View from the front



1. Camera lamp.
2. Infrared lens.
3. Visual camera lens.
4. Lanyard attachment point.

## 6.2 View from the rear



5. USB-C connector.
6. Camera screen.
7. On/off button.
8. Save button.
9. Tripod mount.